



NATIONAL
MARROW
DONOR
PROGRAM®

So simple my roommate could do it!



I'm just happy
you're reading this



Michelle,
Chinese/Vietnam

Jaiden, African
American

Diego,
Hispanic/Latino

Erica, half
Chinese

DID YOU KNOW?

- Registering means you are joining a national database. You are only asked to donate IF you come up as a match.
- You donate your Stem Cells through your Marrow **OR** Blood.
- Adult Stem Cell transplants have helped save over 25,000 people with Leukemia, Lymphoma, Aplastic Anemia, Myeloma, Thalessemia, Sickle Cell Anemia, and more.

Be the ONE to save a life.

People just like Michelle, Jaiden, Diego and Erica are all searching for Adult Stem Cell donor matches because of Leukemia, Lymphoma or other blood diseases. You could help save their lives or the life of someone just like them.

ETHNICITY IS A KEY FACTOR:

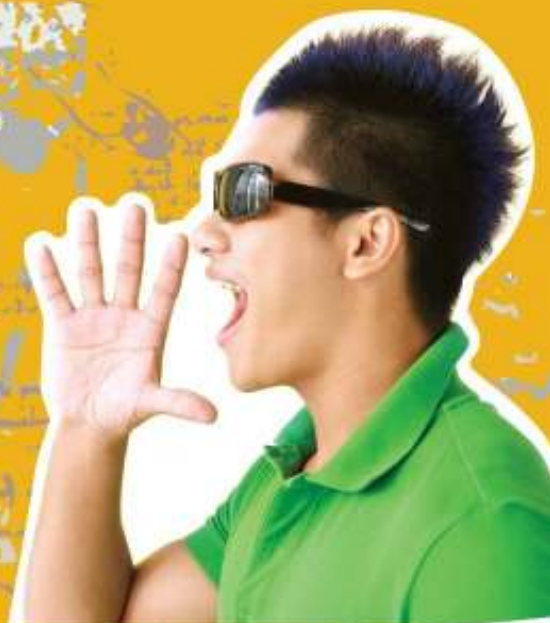
There is a critical shortage of people of Asian American, Pacific Islander, African American, Hispanic/Chicano, and Multi-Racial descent on the National Registry. Matching is *based* on ethnicity. *Everyone* is encouraged to register.

How do you get registered?

- You fill out a form and swab your cheeks.
- You'll be asked for your DL or SS No. and the contact info. of 2 friends or relatives not living with you.

It takes 10 minutes to help save a life.

Stop Studying!
Save a Life!



Marrow Donor Drive

Someone just like you needs your help.

On any day more than 6,000 people with leukemia and other life-threatening blood disorders are searching the National Marrow Donor Program Registry for a marrow donor. They are hoping to find a donor, someone like you, who is willing to help them. Join the community of people who stand ready to save a life.

GET THE FACTS:

www.aadp.org | www.marrow.org

Sponsored by

APAMSA (Asian Pacific American Medical Students Assoc.),

Asian Health Caucus,

VSA (Vietnamese Students Association),

KAHPSA (Korean American Health Professional Students Assoc.)

SNPHA (Student National Pharmaceutical Association)

Drive Information

UCSF DONOR DRIVE

April 30, 2008
(Wednesday)

12noon - 4pm
Med Sci Rm. S-159

(Information Session &
Free Lunch on Wed,
April 23 at HSW 303,
12-1pm)